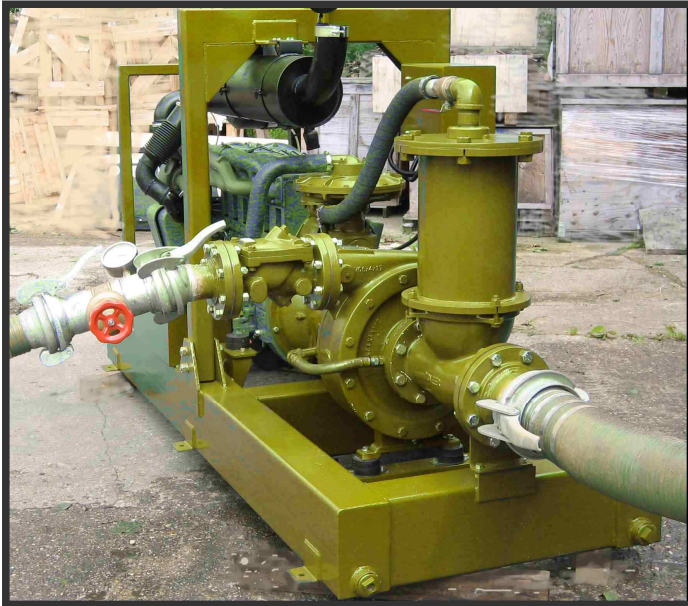


# DIESEL PUMP SETS



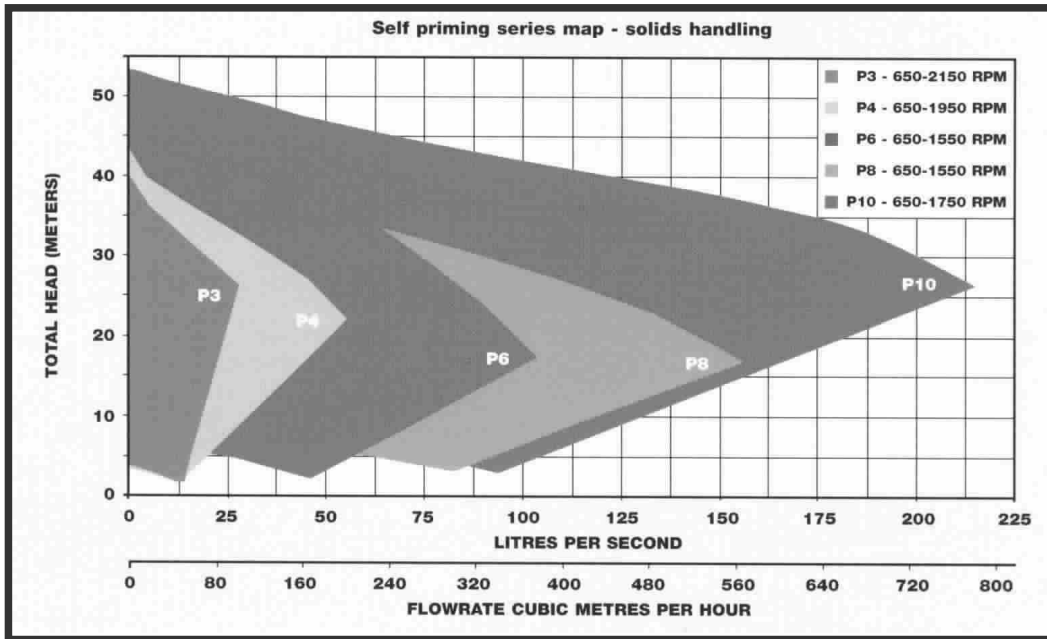
- Flow Rates to 2700 M<sup>3</sup>/ hour
- Heads to 160 metres
- Solids handling to 76mm
- Dry suction lift
- Trailer or skid mounting

**A range of pump sets for freshwater, seawater and hydrocarbon pumping make this series of pumps highly versatile for any application.**

Pumps are available from 75mm (3inch) to 300mm (12 inch) to handle a wide variety of flows and pressure heads.

Pumps are capable of either wet self priming, or automatic dry start priming depending on the requirement.

The direct diesel drive is usually Deutz or CAT motors to ensure reliability of service throughout the world.



### **Characteristics of the P series pumps:**

- Casing and impeller is available in high grade GG30 grey iron, and optionally stainless steel and bronze.
- Open design of impeller to handle suspended solids with a high degree of wear resistance.
- Stainless steel shaft with industry standard mechanical seals.
- Hazardous area ATEX approvals are available for explosion proof applications.
- Simple servicing due to cover plate access without dismantling.

### **Applications include:**

**Wastewater**

**Irrigation**

**Mine and Quarry  
Pumping**

**Pipeline Flushing**

**Fuel Oil Distribution**

**Fire-fighting**