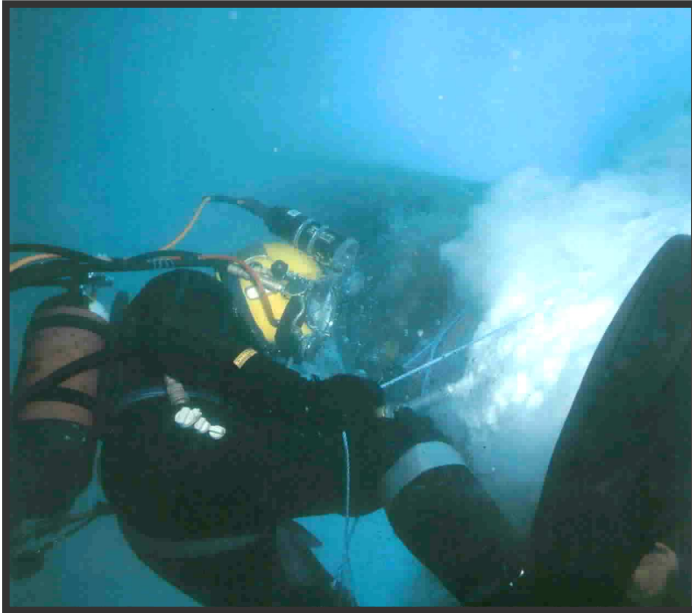


SUB-AQUABRADE



- Improved diver safety
- Effective on hard and soft contamination
- Rapid removal of corrosion
- Low pressure operation
- No need for retro jets
- Up to 5 times faster than conventional grit blasting

Sub-Aquabrade's **lightweight nozzle** and hose design, together with its **ultra low working pressure** makes it ideal for deployment in restricted locations.

Simple to operate even in hostile conditions where dive times are restricted.

Fast and effective at depths of up to **200metres**

Quiet operation aids diver **communication**, and **low grit consumption** gives improved visibility

Cuts concrete leaving a firm clear edge

Low pressure operation leads to **improved safety for divers**

- | | |
|----------------------|---|
| Grit usage | <ul style="list-style-type: none"> • 1-3kg per minute(approximately), commonly uses olivine or garnet 0.5 mm • 200 kg grit pot |
| Water | <ul style="list-style-type: none"> • 1-2 litres per minute(approximately) • 100 litre water tank • Filled with mains or manually |
| Air | <ul style="list-style-type: none"> • 250 cu ft per minute • Runs off standard diesel compressor • Nozzle end pressure 20-80 psi |
| Dimensions | <ul style="list-style-type: none"> • Width 1.4 metre • Length 2.2metres • Height 1.4 metres • Weight approx 400 kg (unladen) |
| Surface finish | <ul style="list-style-type: none"> • Cleans corroded surface to SA3 standard • Matt finish |
| Environmental impact | <ul style="list-style-type: none"> • Minimal 'splash back' due to low pressure • Contaminated material binds to grit and remains in situ • Little disruption to marine life |
| Options available | <ul style="list-style-type: none"> • Single or dual system for 1 or 2 hoses to operate • 0-50 or 0-200 metres operating depth • Complete system in containerised workshop • 'Tight Turn Trailer' option |

Please note that as Harbour Aquabrade is built to meet the client 's requirements, the above details are meant as a **guide** only

